

The de Havilland Dove



The de Havilland Dove was a twin-engine, short-haul airliner manufactured between 1946-1967. It was used by the RAF for carrying VIP's, light transports and communications. It had a maximum speed of 230 mph and seated up to 11 passengers.

The Engine:

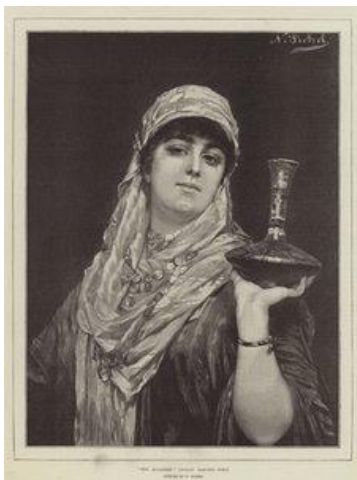


The de Havilland Gipsy Queen 70 Engine

Each engine produced 330hp (250kW)

Later versions of the engine produced 400hp (300 kW) each.

Source: en.wikipedia.org/wiki/De_Havilland_Gipsy_Queen



This is a painting by Nathaniel Sichel called 'The Gipsy Queen'.

It is thought that that the name was given to a strong female leader of a group of gypsies. These were groups of travelling people originating in South Asia and speaking a language called Romani.

Source: meisterdrucke.uk/fine-art-prints/Nathaniel-Sichel/262577/The-Gipsy-Queen.html



A dove is a species of bird that is often pictured as a symbol of peace, freedom or love, sometimes carrying an olive branch.

Source: arkwildlife.co.uk/blogs/wildlife-guides/collared-dove-identification-habitat-and-food